



Series 42 Wedge Lok

DSCC 84103 & CID 59590

RECOMMENDED GAP WIDTH

PCB + 6.35 (.250)

RECOMMENDED TORQUE

80 N-cm (7 in-lbs)

WEIGHT

.89 g/cm (.080 oz/in)

MATERIALS AND FINISH

WEDGES

Material:

Aluminum Alloy
6061-T6 per QQ-A-200/8

Finish:

See finish table on opposite page

SCREW

.09-in. or 2.5-mm hex. socket head cap screw, depending on mounting configuration

Material:

300 series stainless steel per QQ-S-763 ASTM A-582

Finish:

Passivated per AMS2700

OPTIONAL LOCK & FLAT WASHER

Material:

300 series stainless steel per QQ-S-763 ASTM A-582

Finish:

Passivated per AMS2700

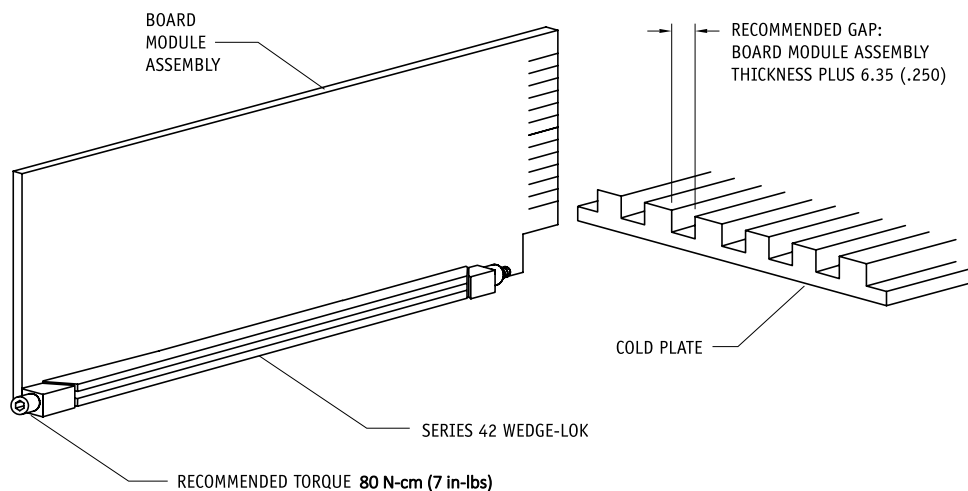
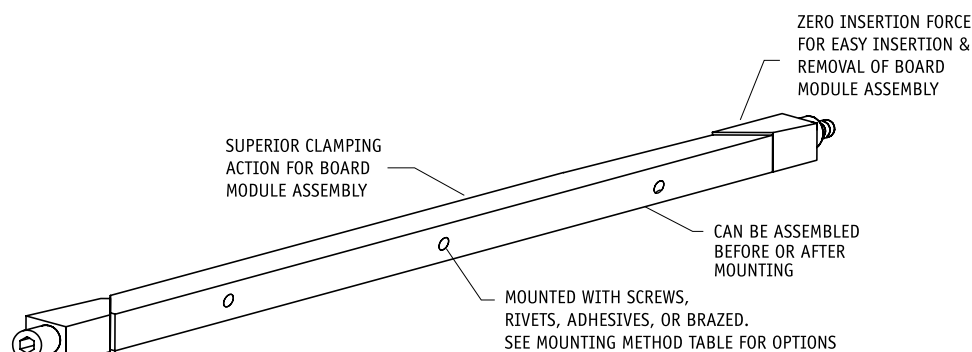
OPTIONAL LOCKNUT

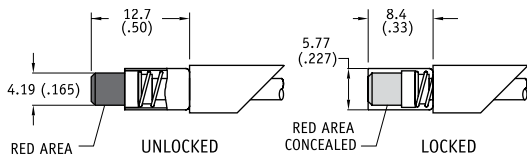
Material:

Type A286 stainless steel per ASTM AMS 5525

Finish:

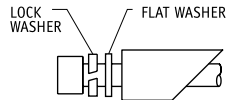
Silver plate per AMS 2410





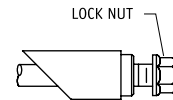
VI OPTION

Indicates assembly is unlocked
(adds 5.1 (.20) to screw length)



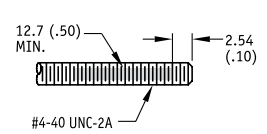
LF OPTION

Provides additional
resistance to shock and
vibration (adds 2.5 (.10)
to screw length)



LN OPTION

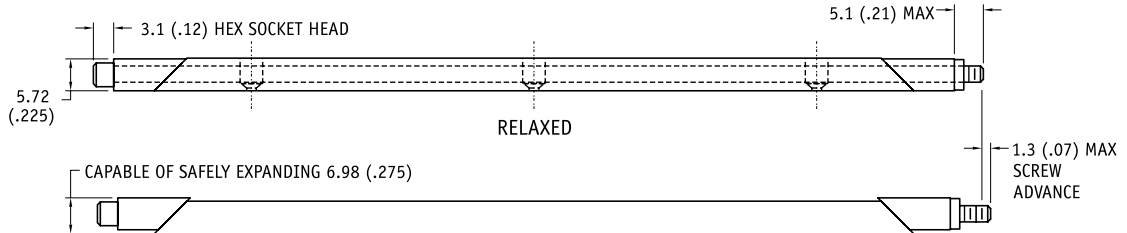
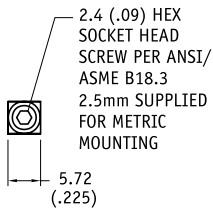
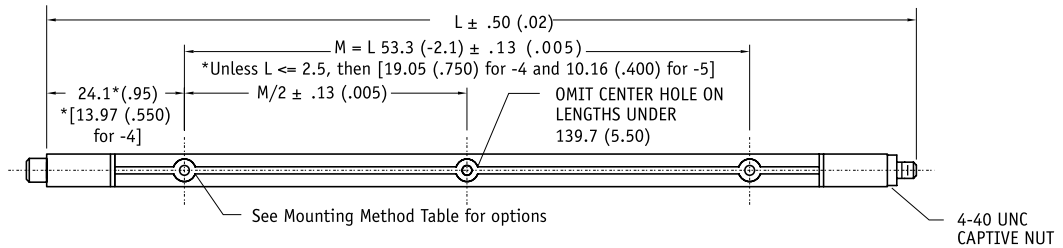
Captivates rear wedge
when untorqued
(adds 2.5 (.10) to
screw length)



L OPTION

Provides additional
resistance to shock
and vibration

Units: mm(in)
unless specified otherwise,
.xx = ± .25, .x = ± .5
(.xxx = ±.010, .xx = ± .02)



EXPANDED

Part Number Code

Series 42 WEDGE-LOK Three-piece 42 VI -10- B - LF- LN - S - L

Optional Visual Indicator

Visual Indicator VI
None [Blank]

Length

Length in 12.7 (.50) increments 4 [50.8 (2.00)]
to 24 [304.8 (12.00)]

Finish

Black Anodized B
Or select code letter from Finish Table

Lock/Flat Washers and Locknut

Lock Washer and Flat Washer LF
None [Blank]

Lock Nut LN
None [Blank]

Mounting

2-56 UNC-2B Tapped Holes S
Or select code letter from Mounting Method Table

Lock Patch

Lock Patch L
None [Blank]

Part Number Code example: 42VI-10-B3D-LF

Series 42 WEDGE-LOK Three-piece, 127.0-mm (5.00-in.) long,
hard black anodize finish with dry film lube, with Lock Washer
and Flat Washer option, standard rivet hole mounting.

FINISH TABLE

CODE LETTER	SURFACE FINISH
[blank]	CHEMICAL FILM PER MIL-C-5541, CLASS 1A, GOLD, NON ROHS COMPLIANT
CC	CHEMICAL FILM PER MIL-C-5541, CLASS 1A, CLEAR
EN	ELECTROLESS NICKEL PER MIL-C-26074, CLASS 4, GRADE B, BRIGHT
N	NICKEL PLATE PER QQ-N-290, CLASS 1, GRADE G, BRIGHT
B	BLACK ANODIZE PER MIL-A-8625, TYPE II, CLASS 2
B3	HARD BLACK ANODIZE PER MIL-A-8625, TYPE III, CLASS 2
B3D	HARD BLACK ANODIZE WITH DRY FILM LUBE PER MIL-L46010

MOUNTING METHOD TABLE

CODE LETTER	METHOD
[blank]	RIVET MOUNT (Ø 1.70 + .10/- .03 (.067 + .004/.001) THRU □ Ø 3.96 (.15) ∇ 5.08 (.200) ∇ Ø 3.56 (.140) x 100°)
A	NO MOUNTING HOLES
S	2-56 UNC-2B TAPPED HOLE
T	0-80 UNF-2B TAPPED HOLE
M2	M2 X .40 TAPPED HOLE
M	M2.5 X .45 TAPPED HOLE
NOTE:	RIVET (BLANK) PARTS ARE SHIPPED UNASSEMBLED